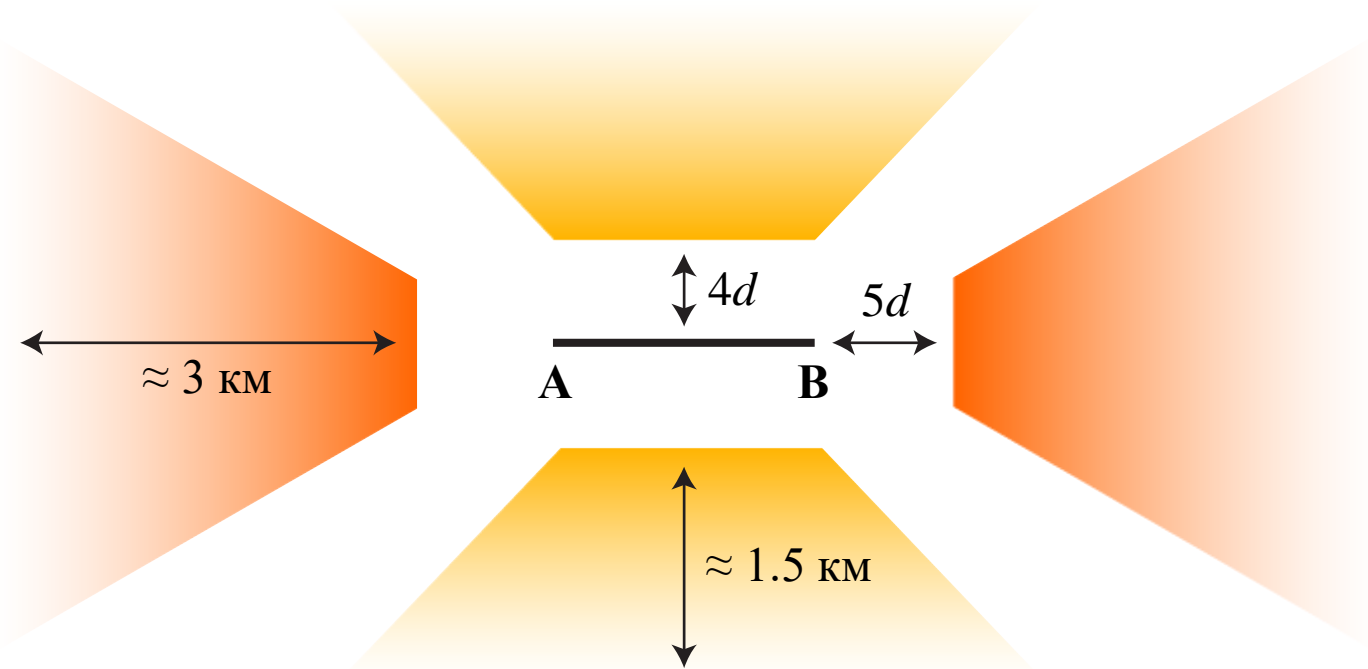
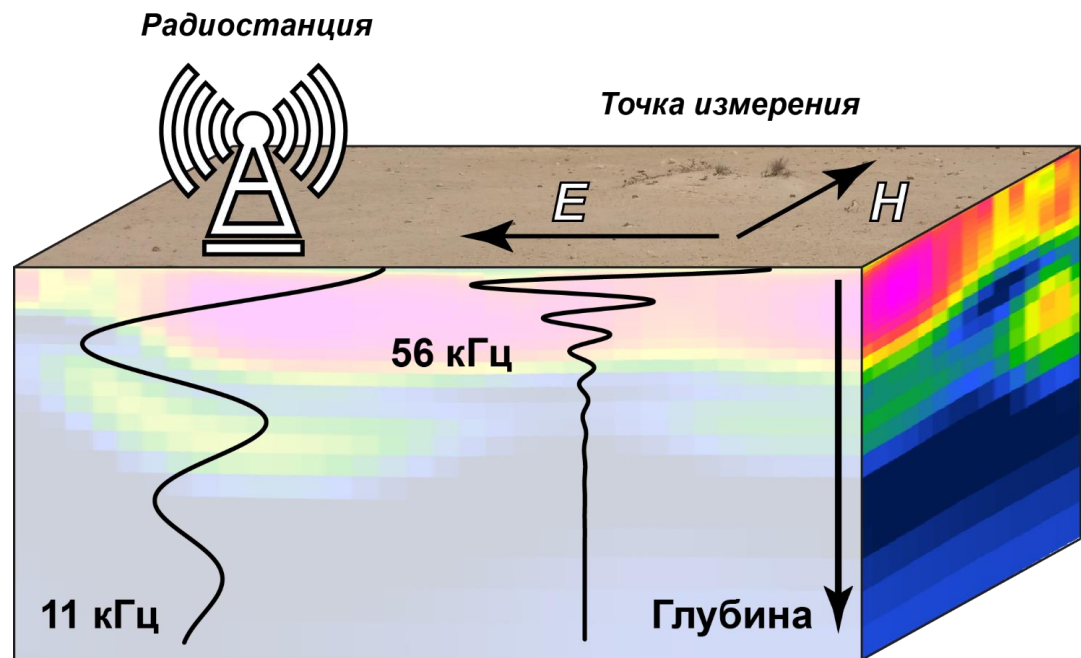


# Применение метода РМТ-К для решения малоглубинных задач

# Метод РМТ-К



Скин-слой  $d \approx 500\sqrt{\rho/f}$

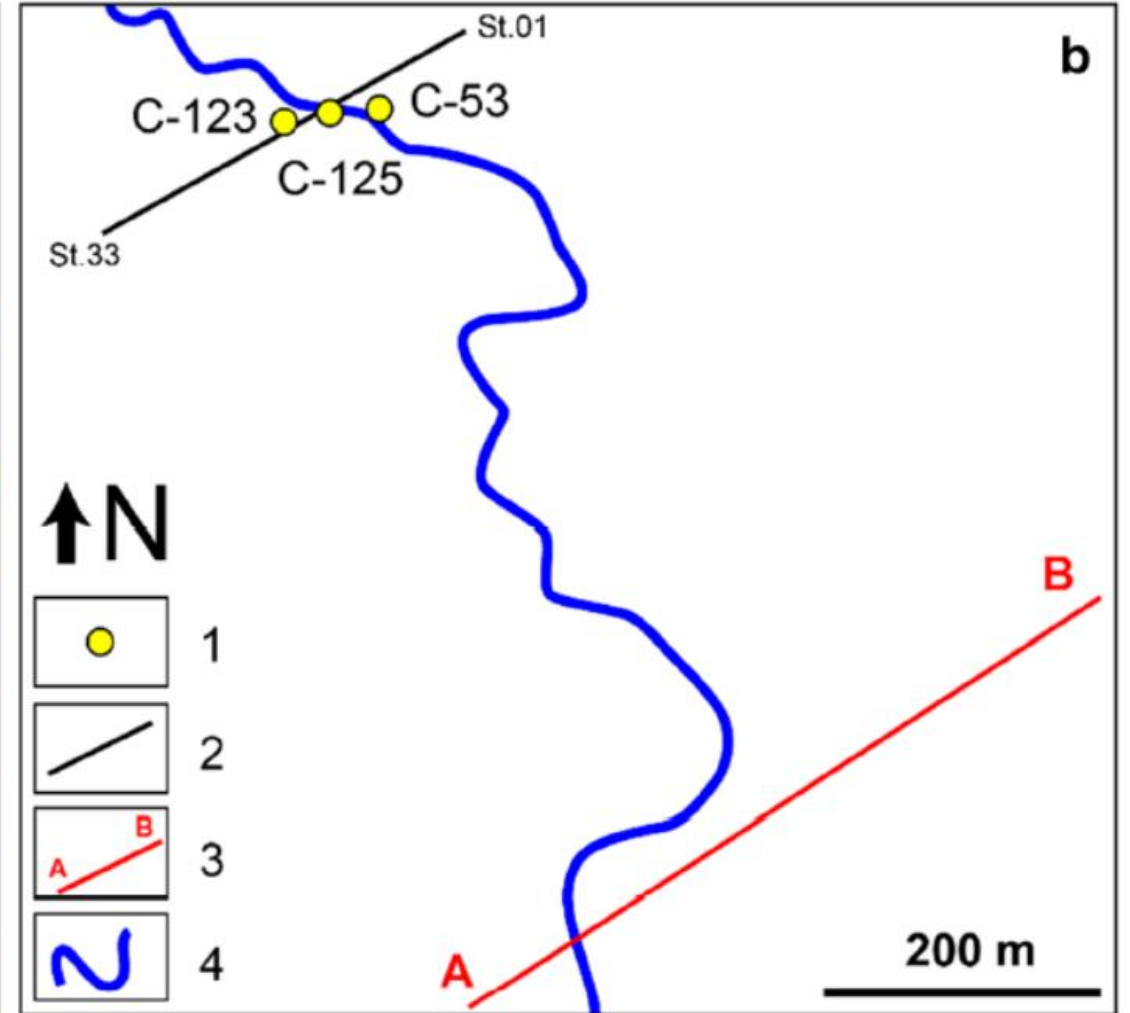
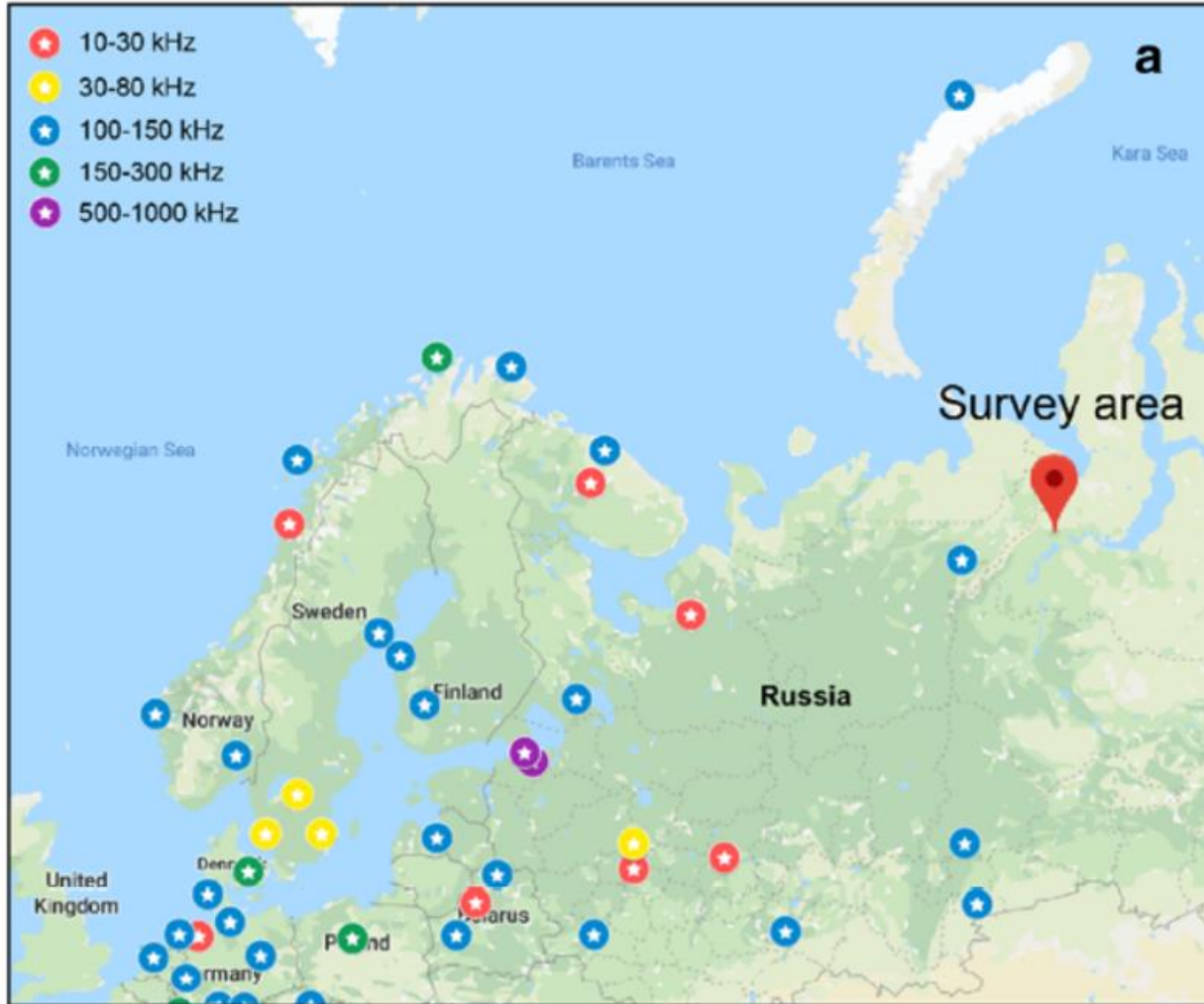
$$\rho_k = \frac{(E/H)^2}{2\pi f \mu_0}$$

$$\varphi_z = \varphi_E - \varphi_H$$

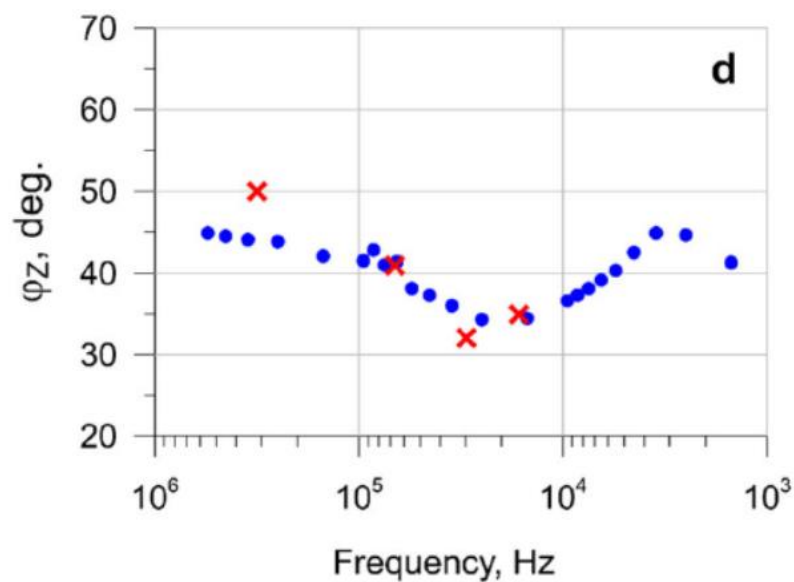
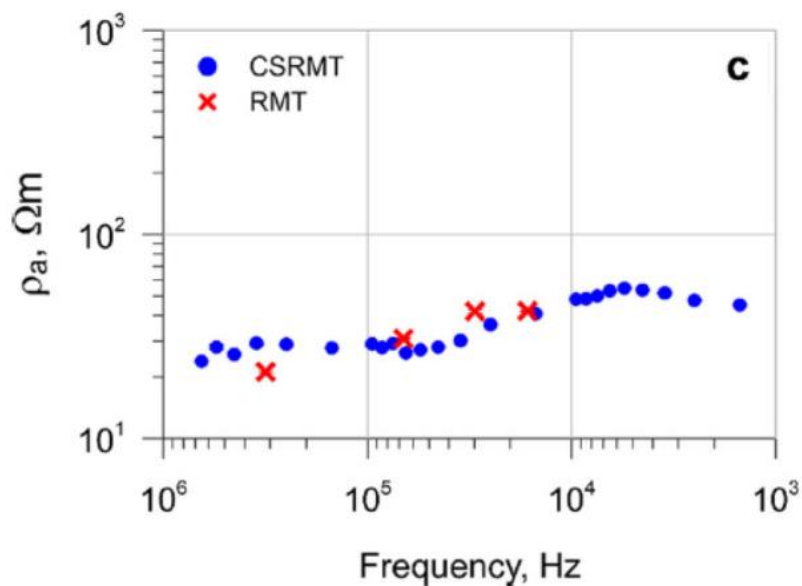
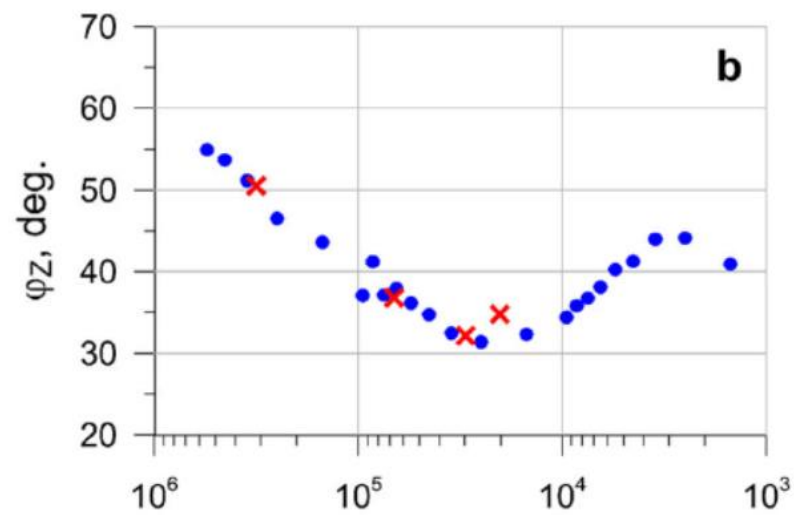
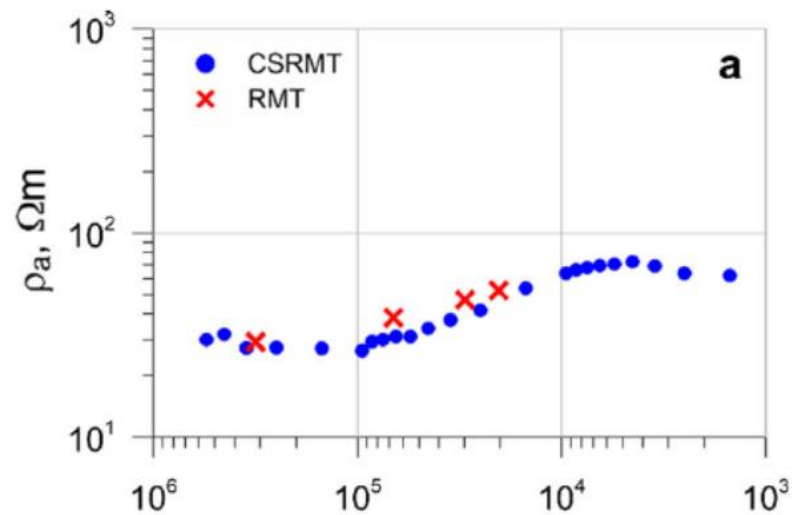


TENSOR-M

# Расчленение мерзлых грунтов



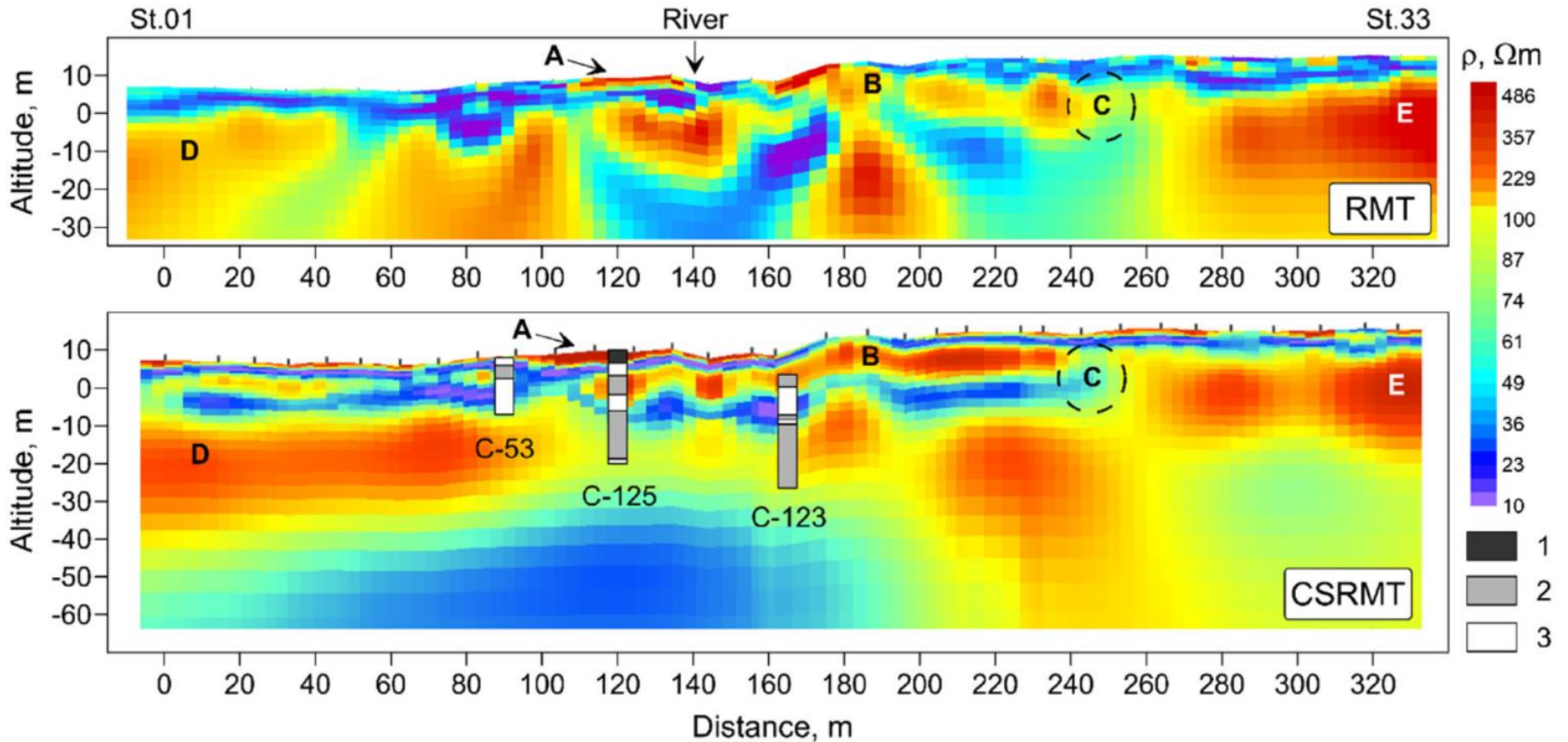
# Расчленение мерзлых грунтов





TENSOR-M

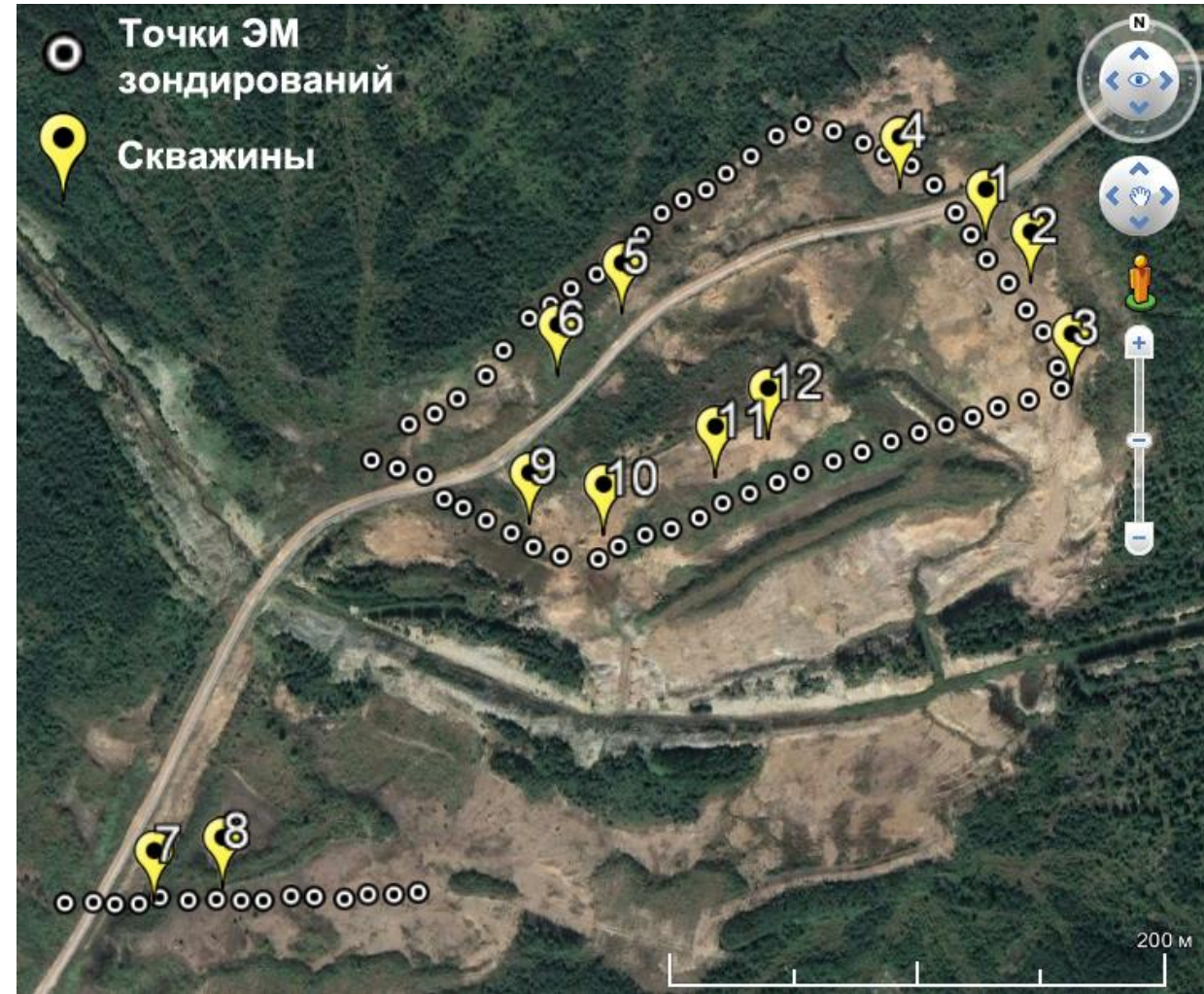
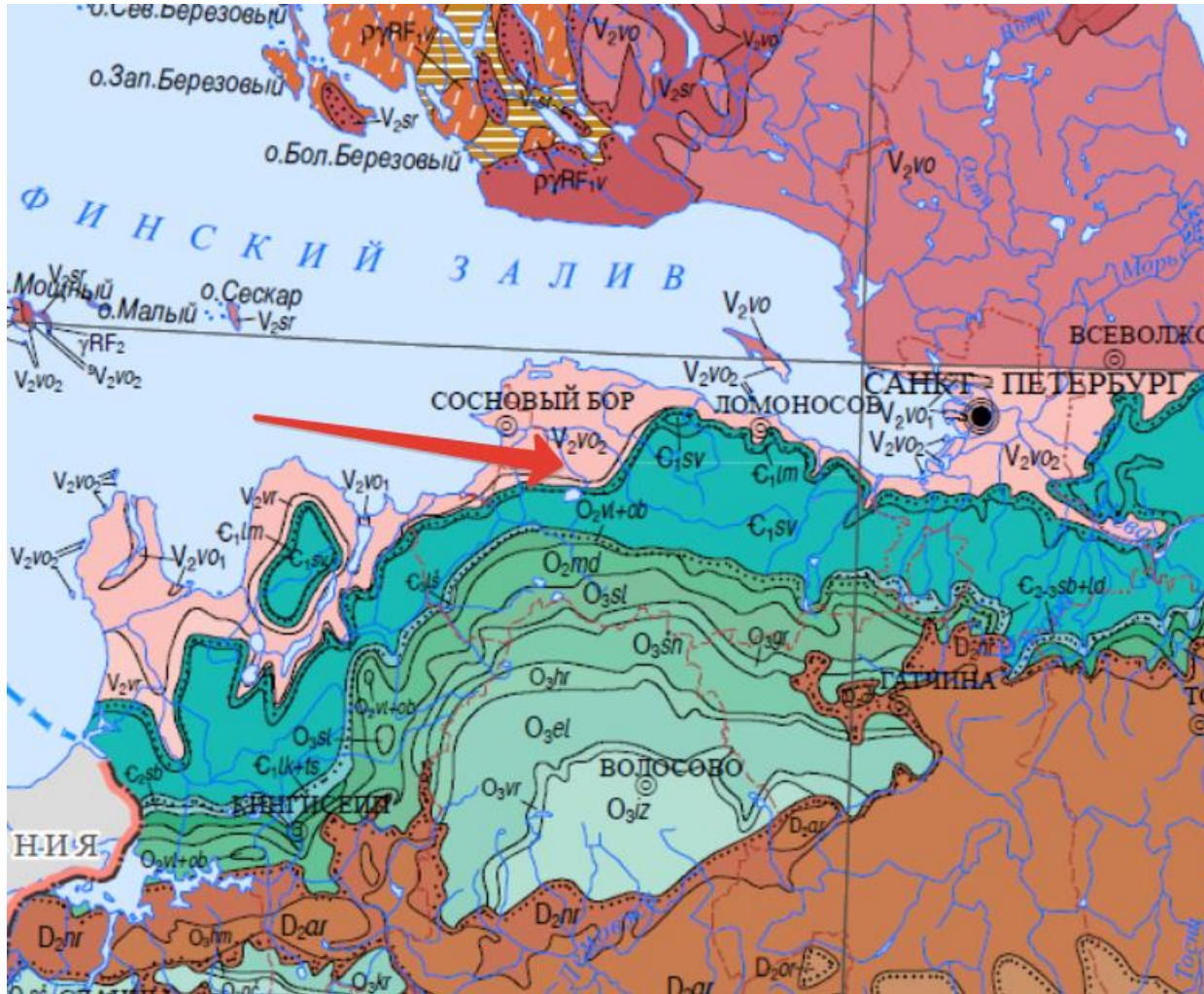
# Расчленение мерзлых грунтов

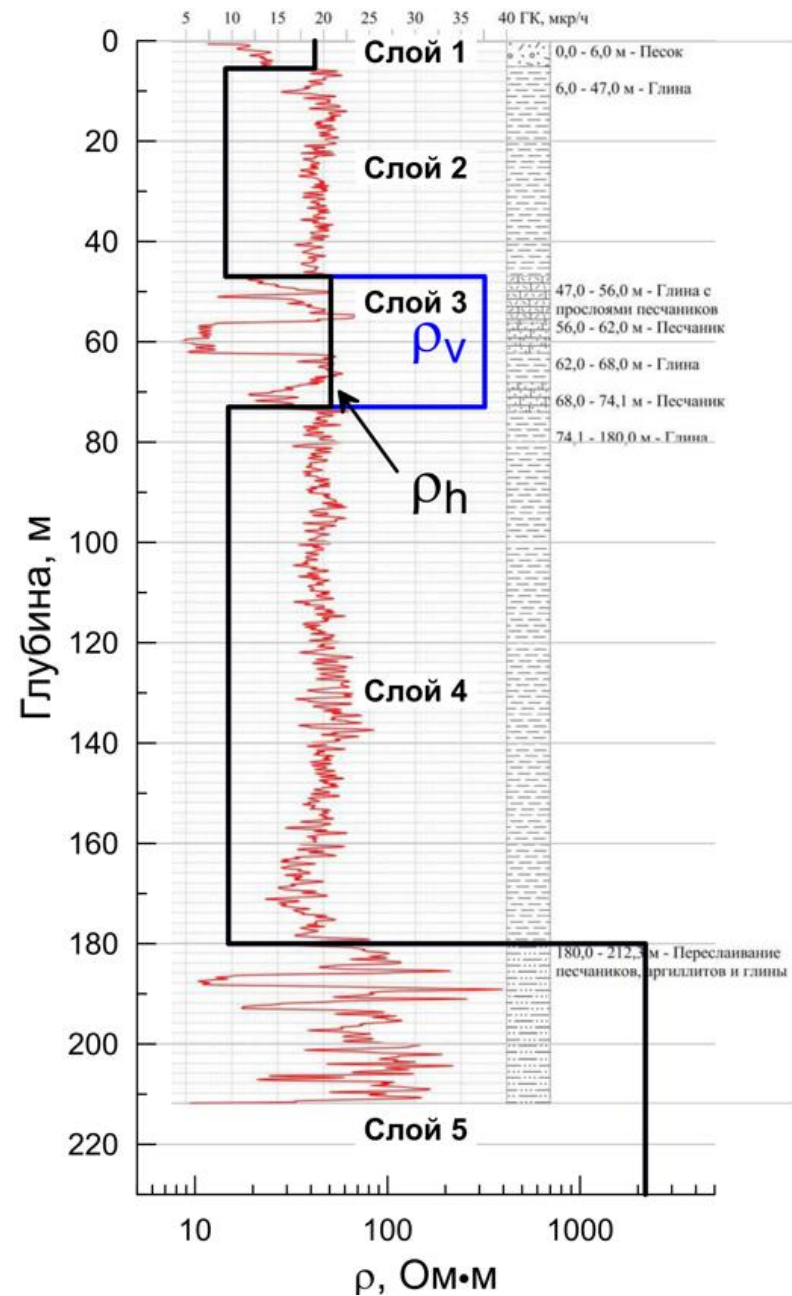
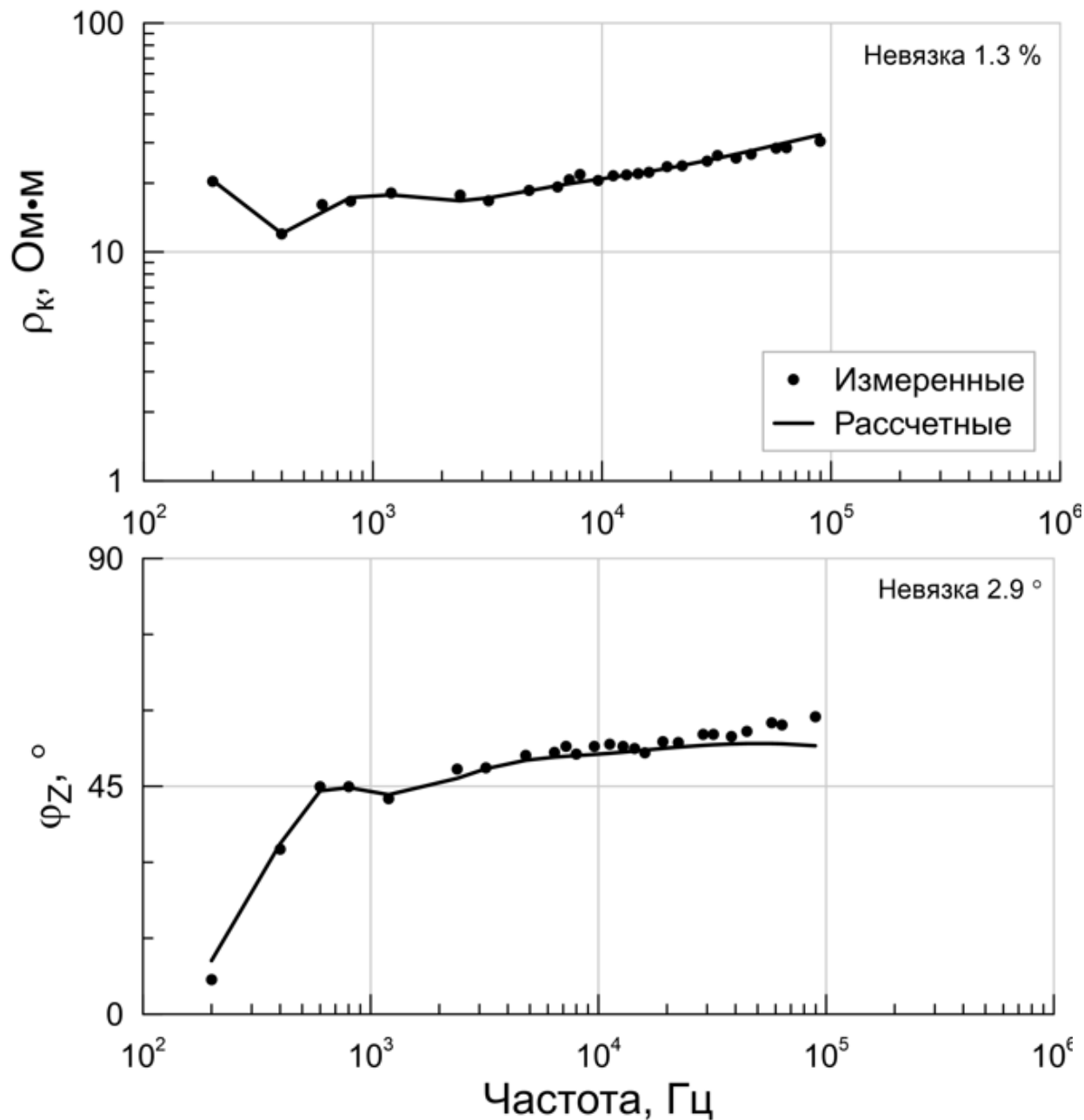




TENSOR-M

# Задачи гидрогеологии

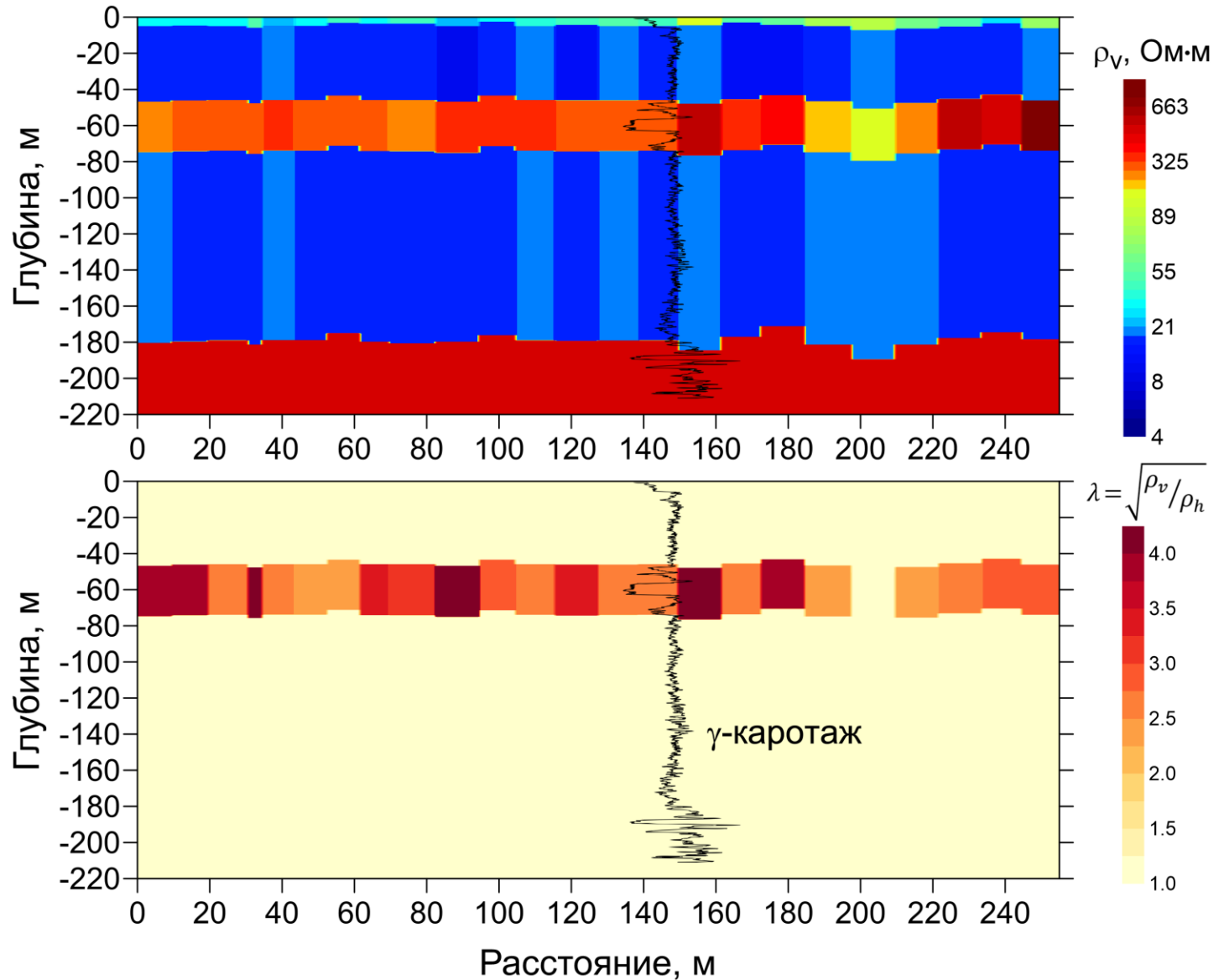






TENSOR-M

# Задачи гидрогеологии

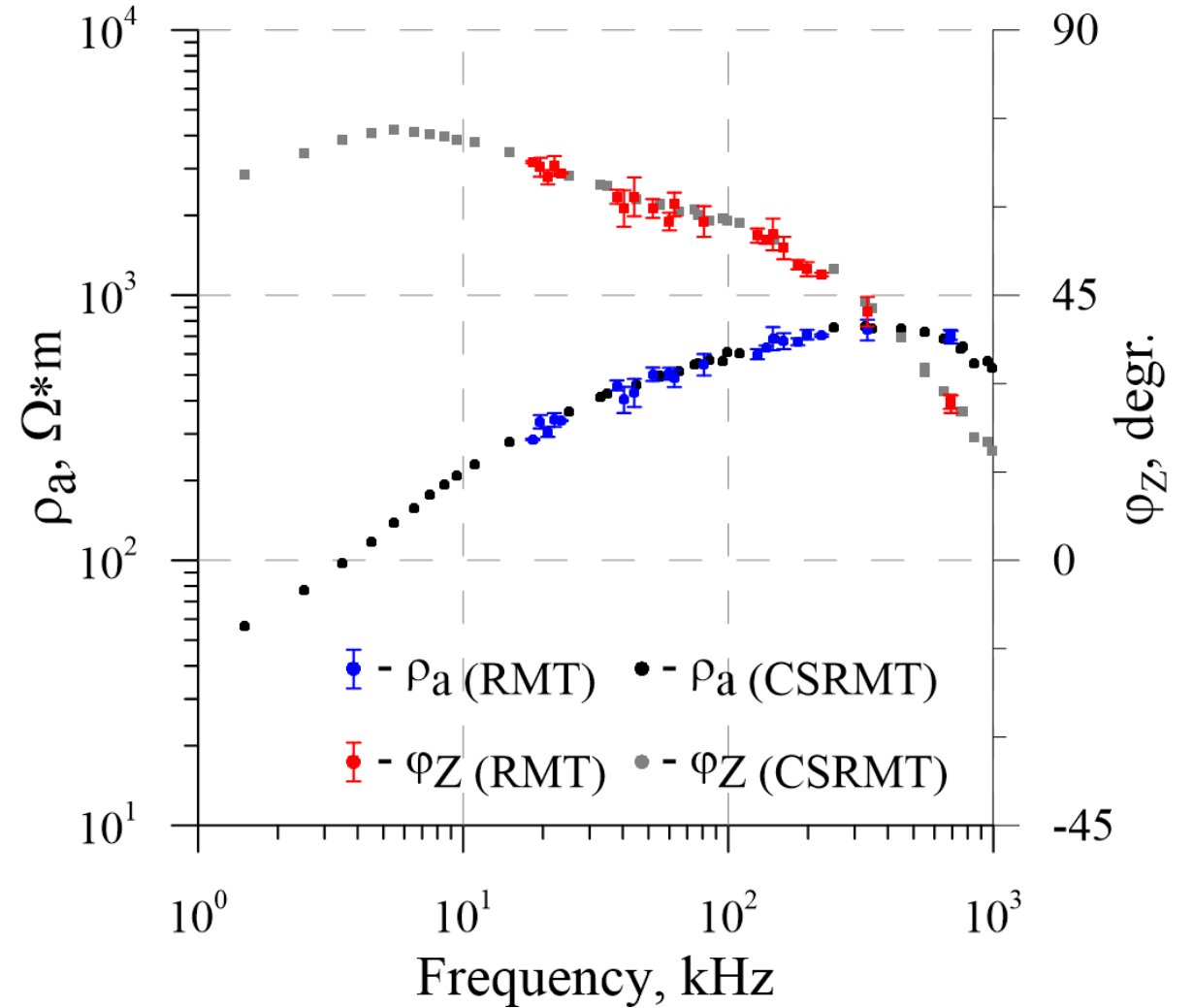
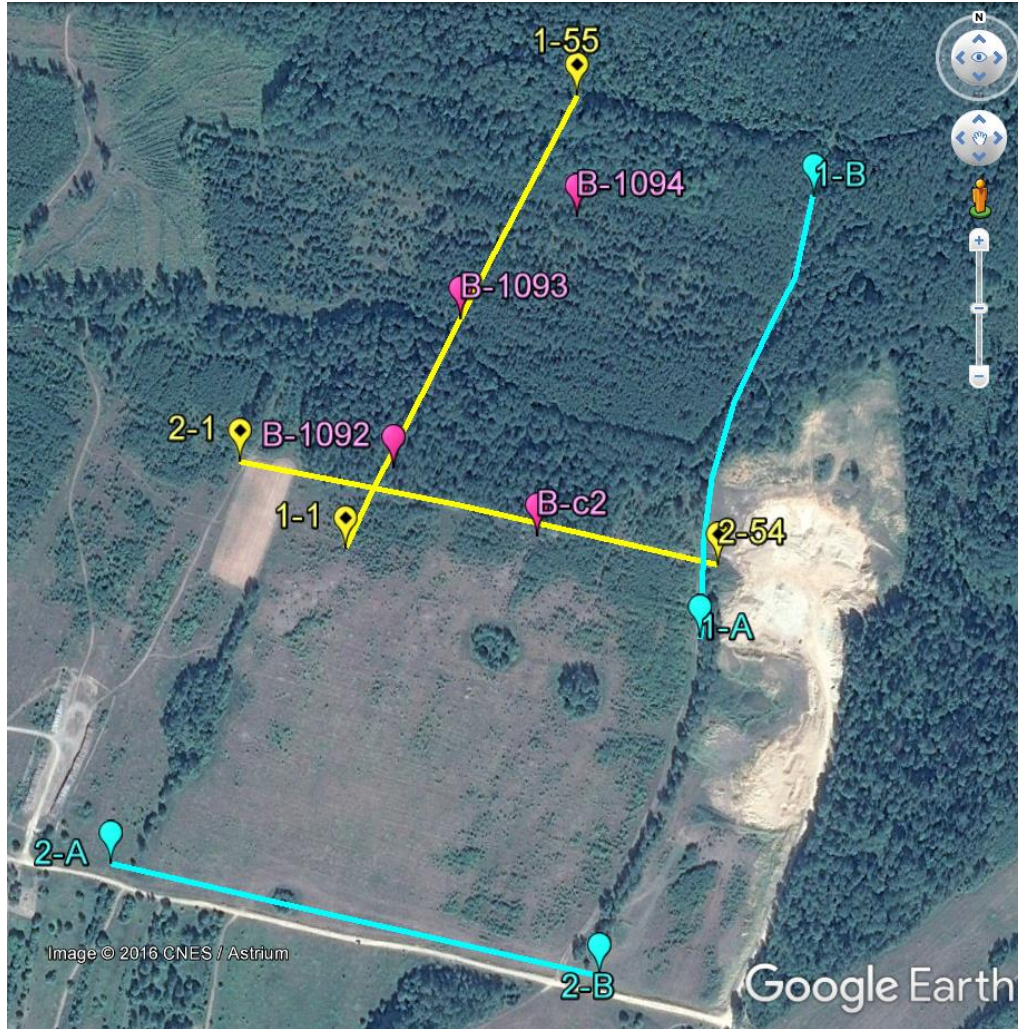






TENSOR-M

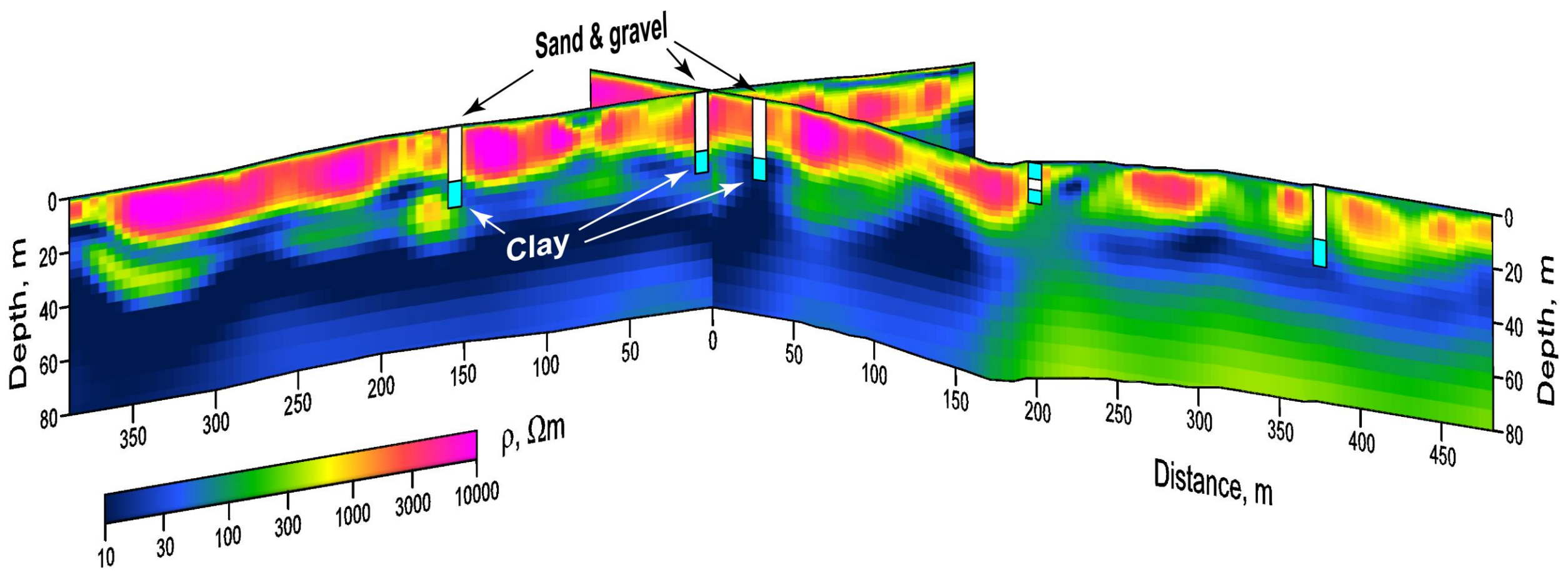
# Поиск песчано-гравийных смесей





TENSOR-M

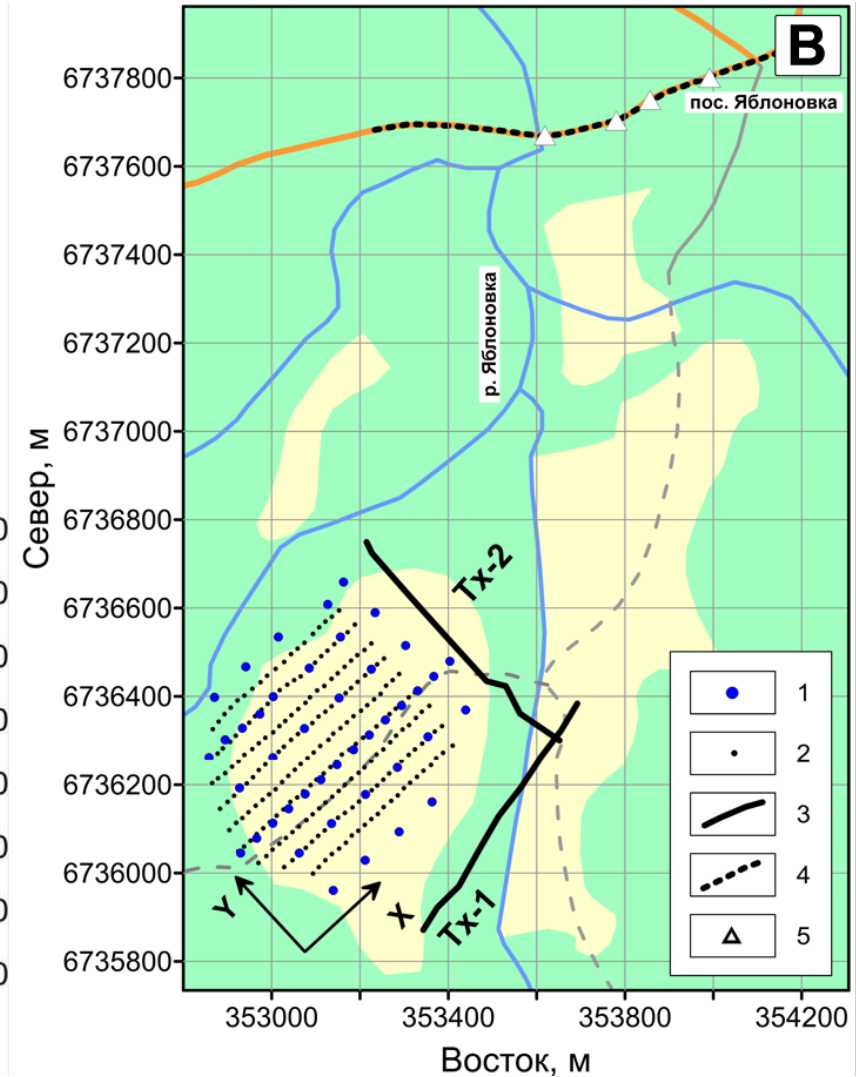
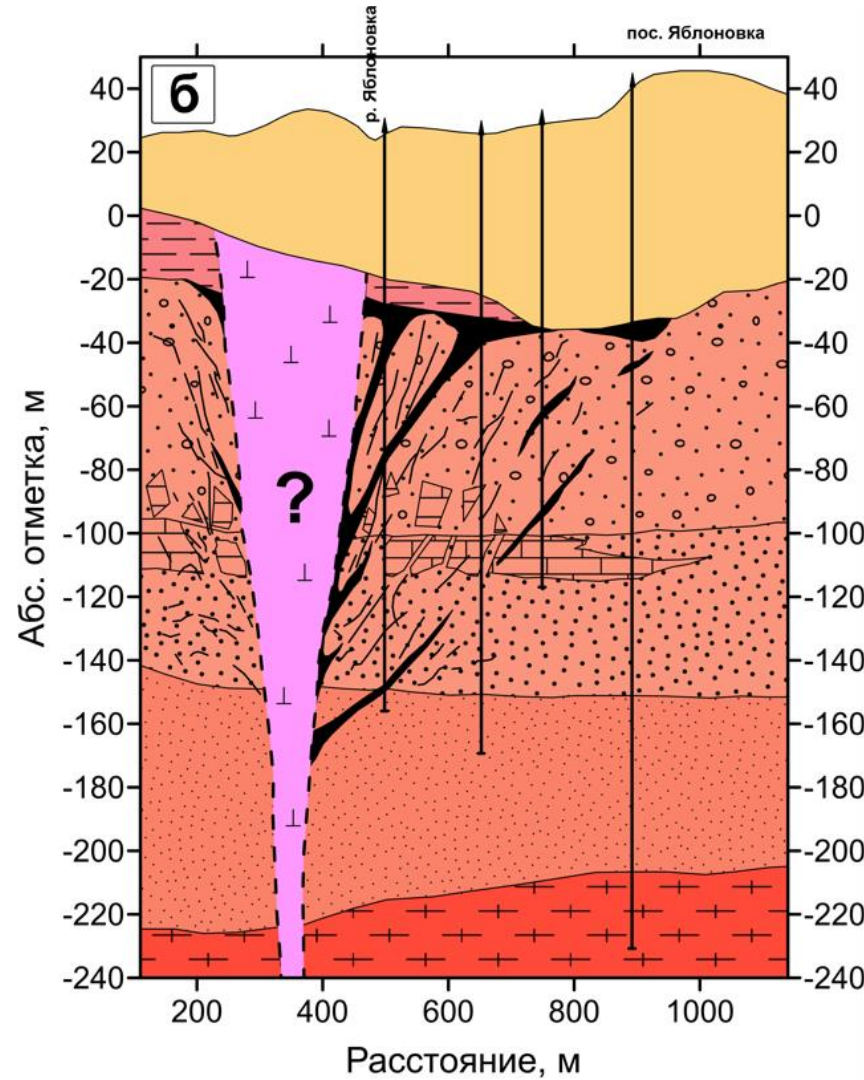
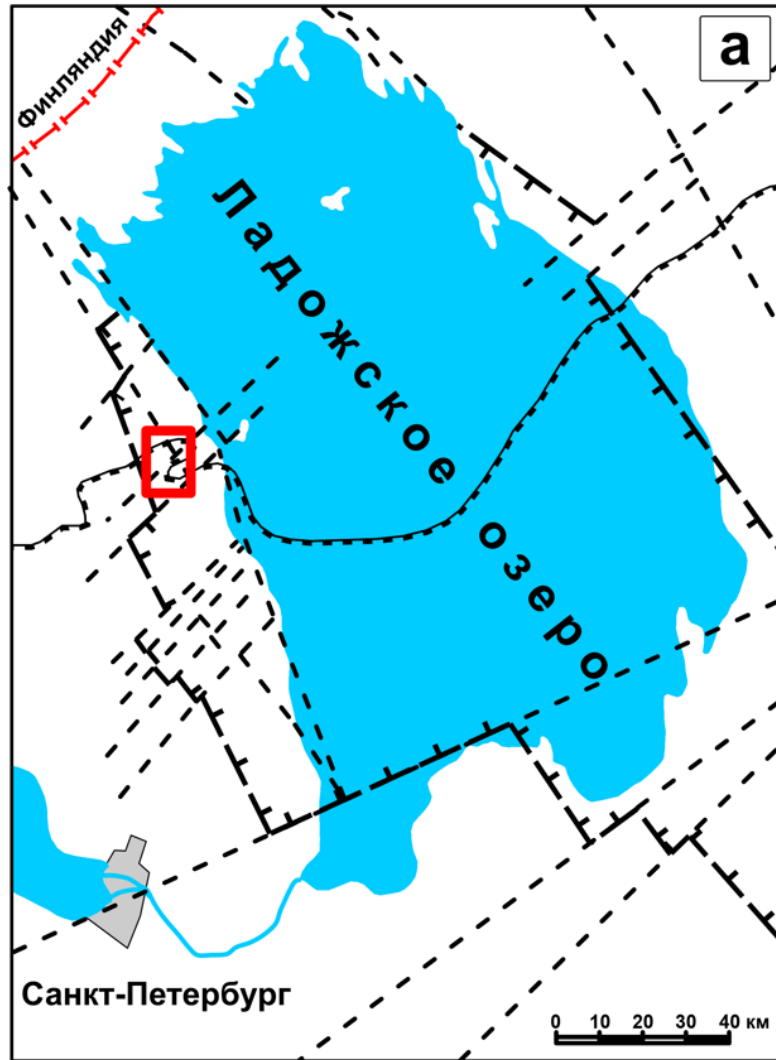
# Поиск песчано-гравийных смесей



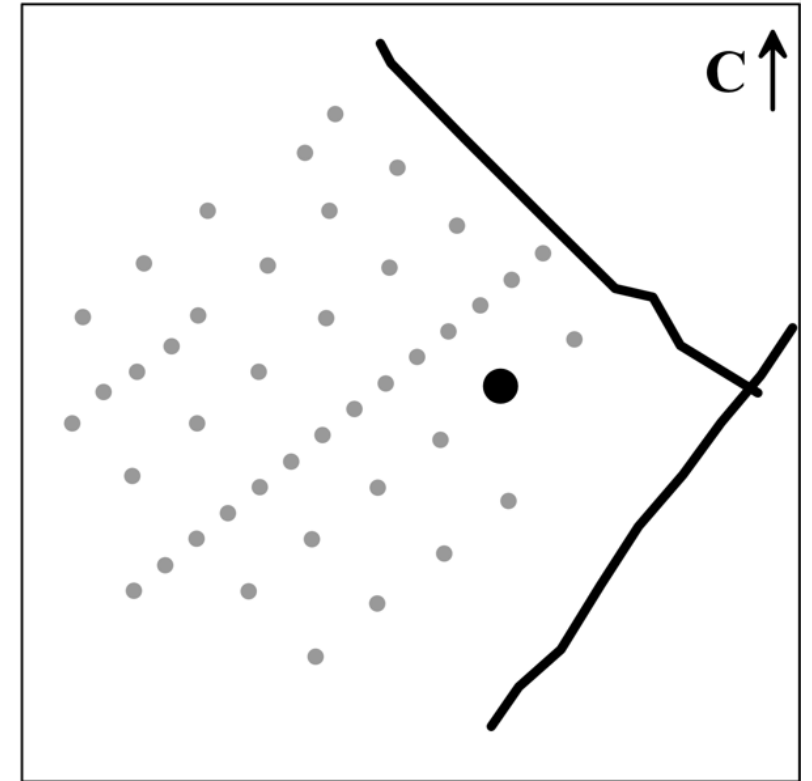
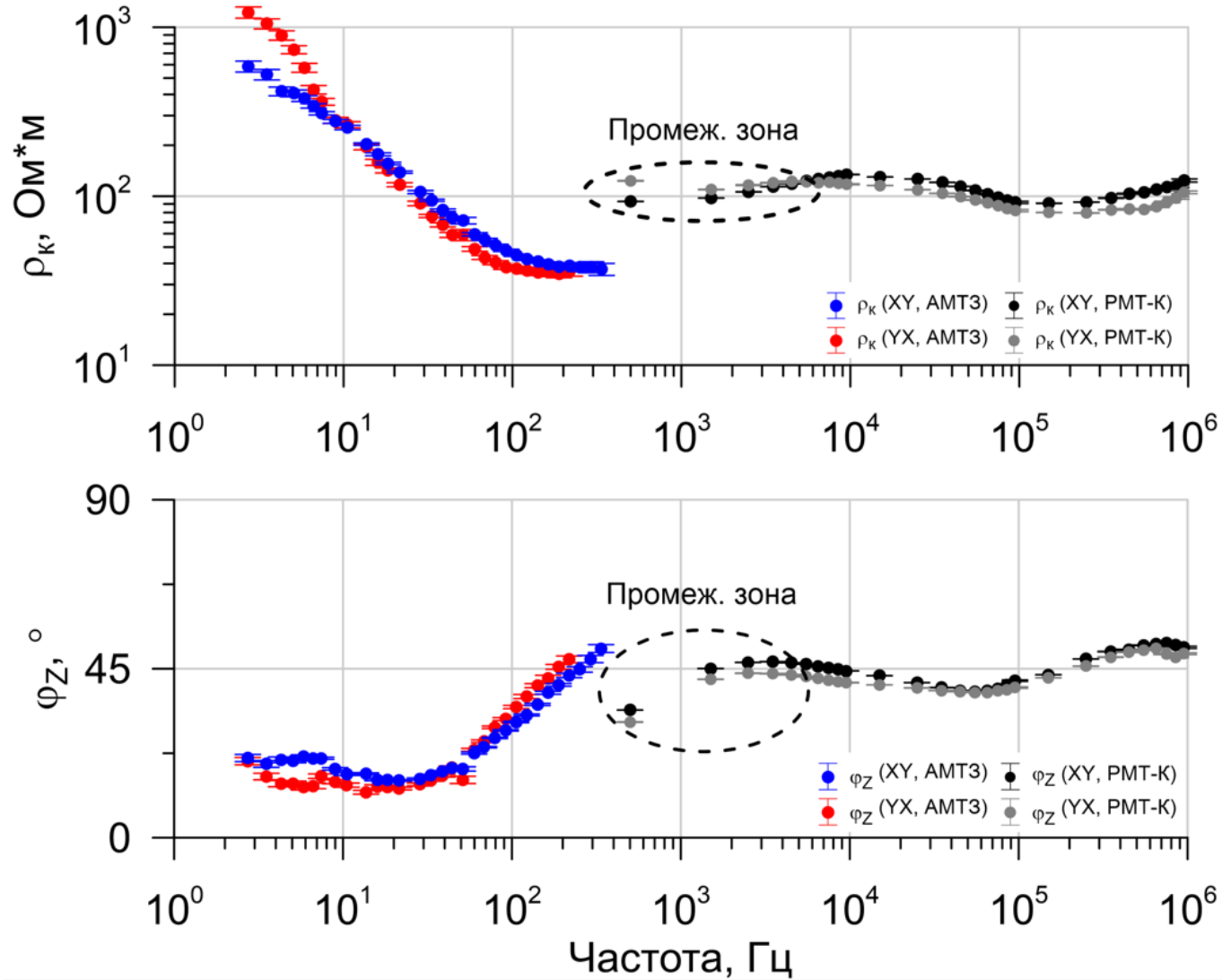


TENSOR-M

# Геологические задачи



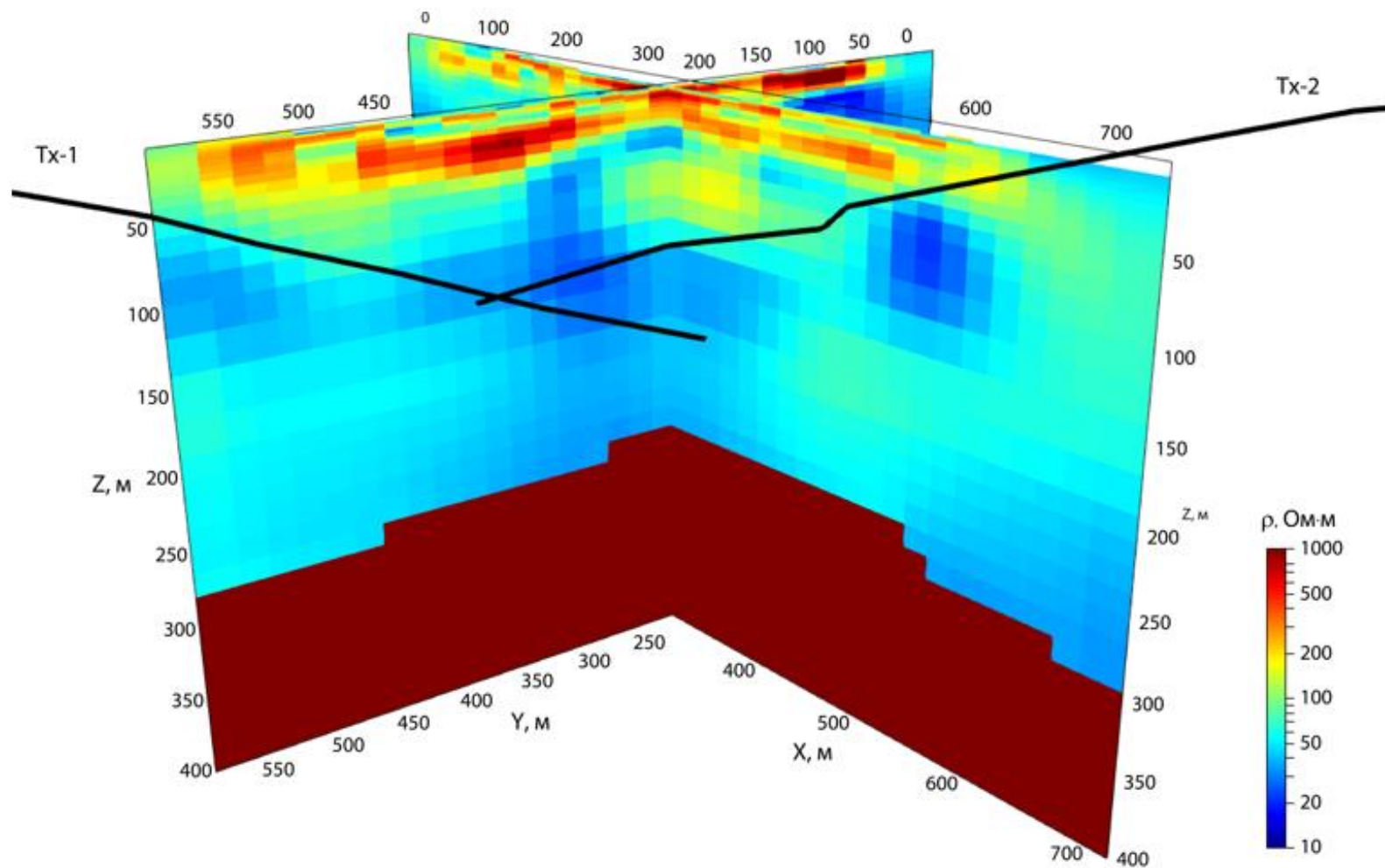
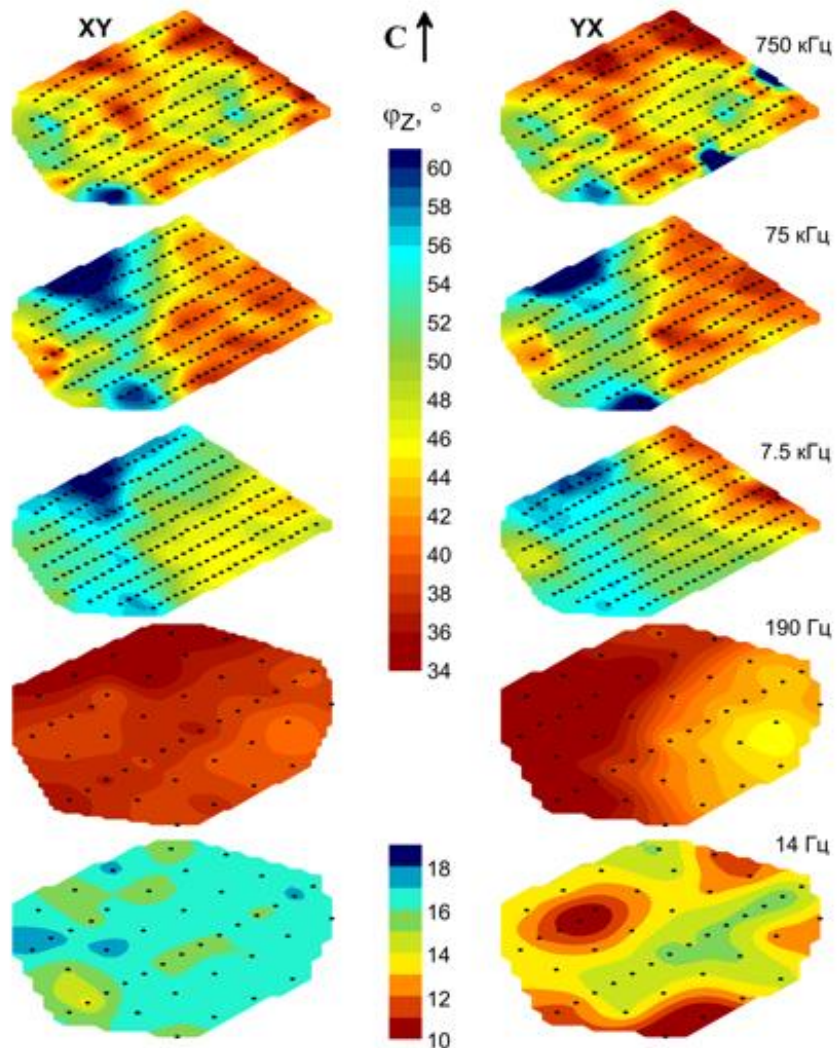
# Геологические задачи





TENSOR-M

# Геологические задачи



# Геологические задачи

